



INDOFINE Chemical Company, Inc.

121 Stryker Lane, Bldg. 30, Suite 1 • Hillsborough, NJ 08844 • U.S.A.

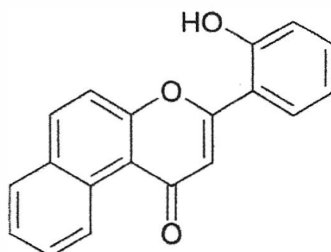
Phone: (908) 359-6778 • FAX: (908) 359-1179

website: www.indofinechemical.com

e-mail: chemical@indofinechemical.com

CERTIFICATE OF ANALYSIS

<u>Catalog Number:</u>	H-603
<u>ProductName:</u>	2'-HYDROXY-b-NAPHTHOFLAVONE
<u>Lot Number:</u>	0102008
<u>Chemical Formula:</u>	C ₁₉ H ₁₂ O ₃
<u>Molecular Weight:</u>	288.31
<u>Melting Point</u>	Above 290°C
<u>Appearance:</u>	Light cream color powder
<u>Solubility:</u>	Soluble in DMSO
<u>TLC:</u>	Chloroform : Methanol (9:1)
<u>NMR Spectrum:</u>	Enclosed (Confirms to the structure)
<u>Storage:</u>	Cool dry place
<u>Purity (HPLC):</u>	98.22%





INDOFINE Chemical Company, Inc.

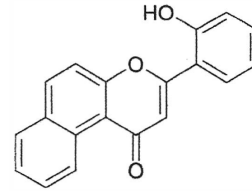
121 Stryker Lane, Bldg. 30, Suite 1 • Hillsborough, NJ 08844 • U.S.A.

Phone: (908) 359-6778 • Fax: (908) 359-1179

Website: www.indofinechemical.com

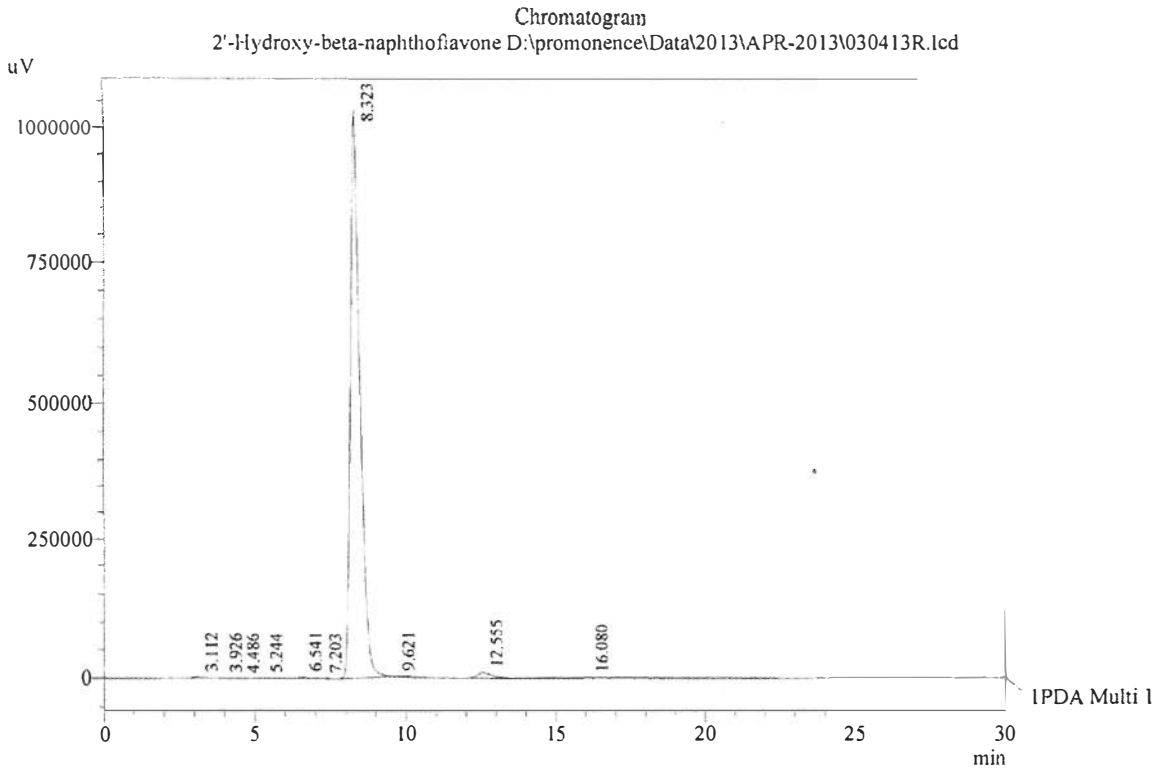
E-mail: chemical@indofinechemical.com

HPLC ANALYSIS



Acquired by : Sanjeev
 Sample Name : 2'-Hydroxy-beta-naphthoflavone
 Sample ID : Lot No:-0102008
 Injection Volume : 20 uL
 Data Filename : 030413R.lcd
 Method Filename : Linear Isocratic.M.lcm
 Col : LUNA C-18(2), (250mm x4.6mm 5.0μ)
 Flow : 1.000 mL/min.
 Mobile Phase : A(30% of Water) B(70% of Acetonitrile)

Catalog No.: H-603
 Product name: 2'-Hydroxy-β-Naphthoflavone
 Lot No.: 0102008



1 PDA Multi 1 / 230nm 4nm

PeakTable

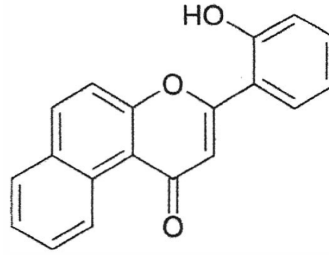
PDA Ch1 230nm 4nm

Peak#	Name	Ret. Time	Area	Area %	Relative Retention Time
1	RT:3.112	3.112	6987	0.03	0.37
2	RT:3.926	3.926	8105	0.04	0.47
3	RT:4.486	4.486	6572	0.03	0.54
4	RT:5.244	5.244	8246	0.04	0.63
5	RT:6.541	6.541	47770	0.21	0.79
6	RT:7.203	7.203	4361	0.02	0.87
7	2'-OH-beta-naphthoflavone	8.323	22418804	98.22	1.00
8	RT:9.621	9.621	7378	0.03	1.16
9	RT:12.555	12.555	300301	1.32	1.51
10	RT:16.080	16.080	16431	0.07	1.93
Total			22824956	100.00	

INDOFINE Chemical Company, Inc.

121 Stryker Lane, Bldg. 30, Suite 1
Hillsborough, NJ 08844

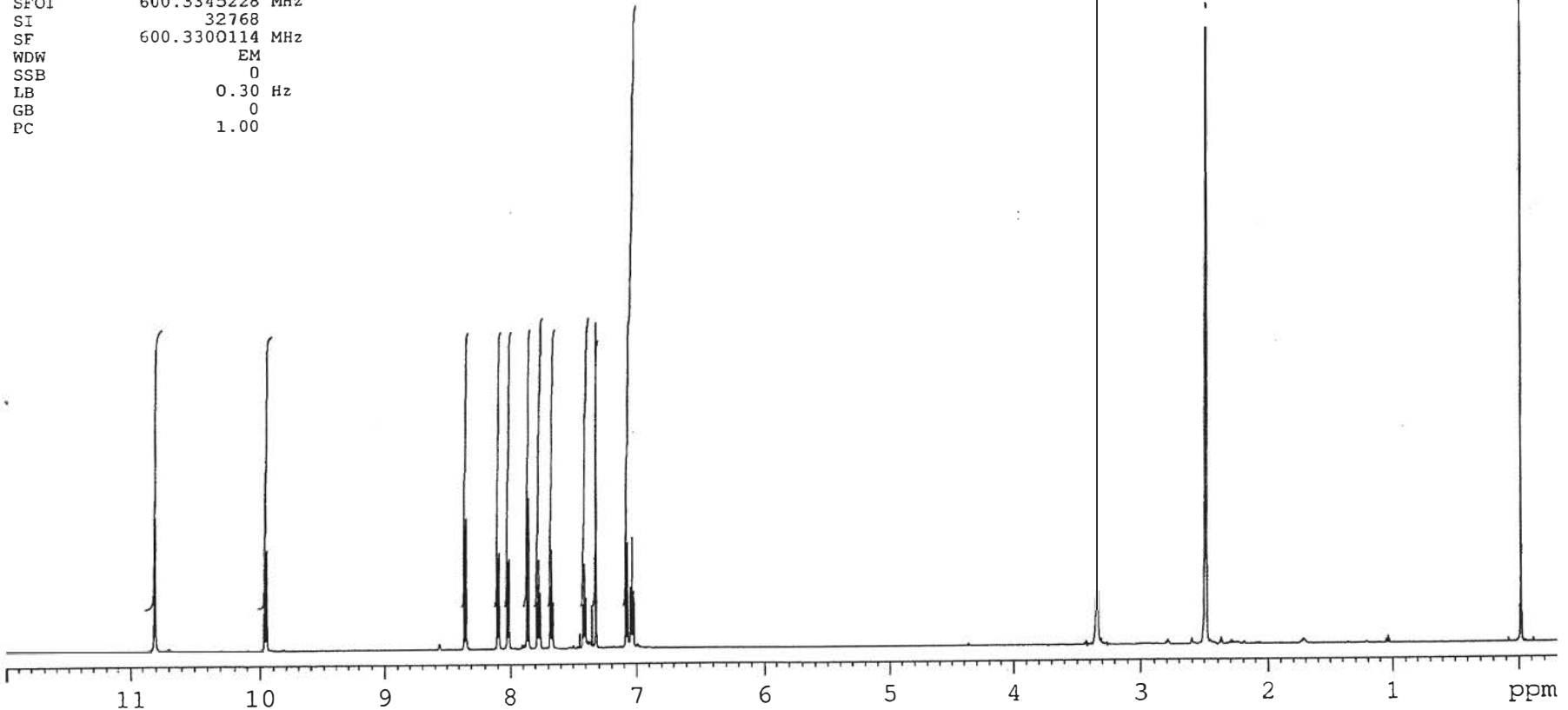
Catalog No.: H-603
Product name: 2'-Hydroxy- β -Naphthoflavone
Lot No.: 0102008



SOLVENT DMSO
NS 16
DS 0
SWH 9803.922 Hz
FIDRES 0.326819 Hz
AQ 1.5299480 sec
RG 22.6
DW 51.000 usec
DE 6.00 usec
TE 298.2 K
D1 1.50000000 sec
TDO 1

ICC-APR-12
1H IN DMSO
AVANCE-600

===== CHANNEL f1 =====
NUC1 1H
P1 7.50 usec
PL1 2.60 dB
PLLW 6.62584448 W
SFO1 600.3345228 MHz
SI 32768
SF 600.3300114 MHz
WDW EM
SSB 0
LB 0.30 Hz
GB 0
PC 1.00

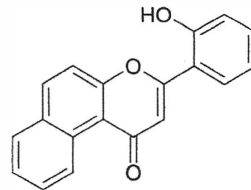


1.000
0.972
0.981
0.983
0.983
0.992
1.032
0.991
1.031
0.952
2.152

INDOFINE Chemical Company, Inc.

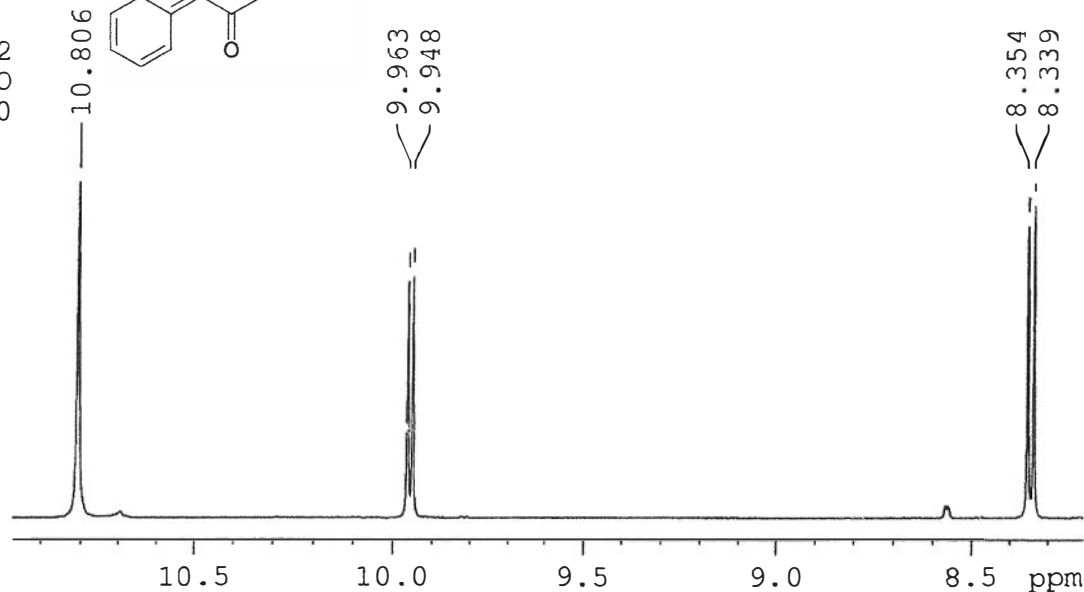
121 Stryker Lane, Bldg. 30, Suite 1
Hillsborough, NJ 08844

Catalog No.: H-603
Product name: 2'-Hydroxy-β-Naphthoflavone
Lot No.: 0102008

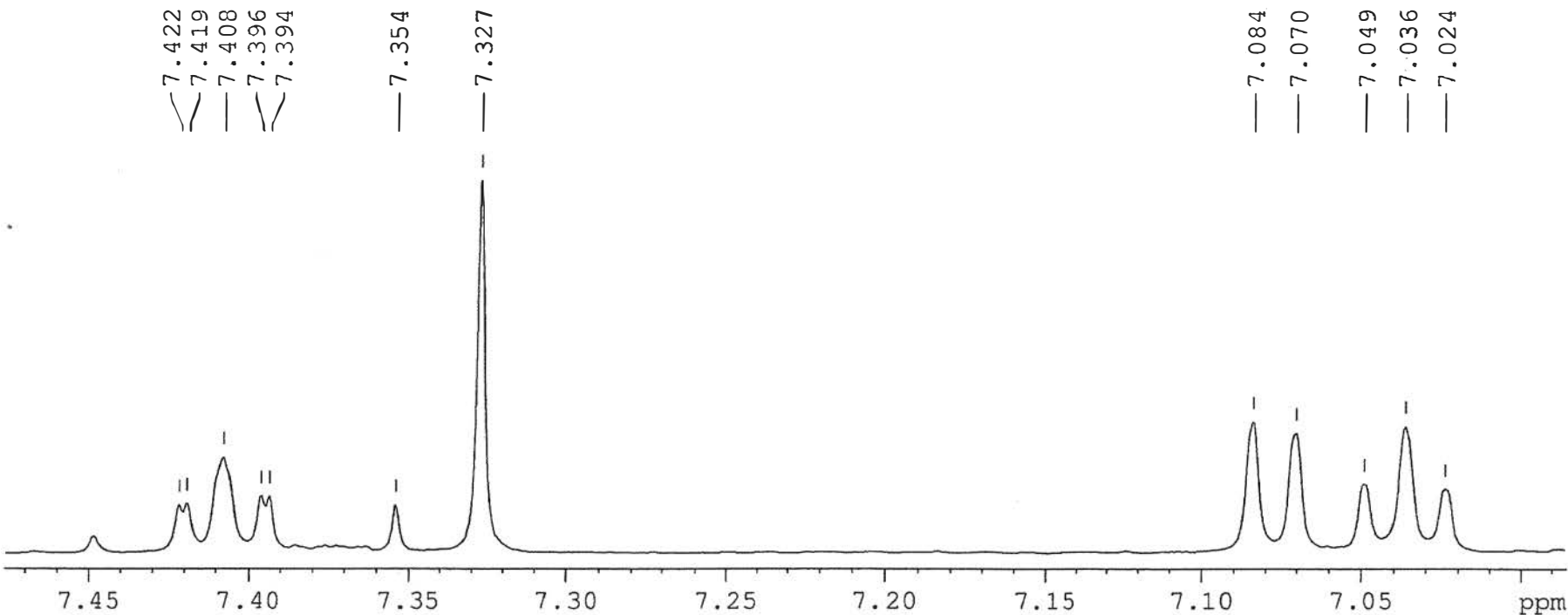


SOLVENT DMSO
NS 16
DS 0
SWH 9803.922 Hz
FIDRES 0.326819 Hz
AQ 1.5299480 sec
RG 22.6
DW 51.000 usec
DE 6.00 usec
TE 298.2 K
D1 1.5000000 sec
TD0 1

ICC-APR-12
1H IN DMSO
AVANCE-600

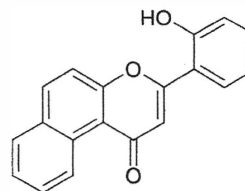


==== CHANNEL f1 =====
NUC1 1H
P1 7.50 usec
PL1 2.60 dB
PL1W 6.62584448 W
SFO1 600.3345228 MHz
SI 32768
SF 600.3345114 MHz
WDW EM
SSB 0
LB 0.30 Hz
GB 0
PC 1.00



INDOFINE Chemical Company, Inc.

121 Stryker Lane, Bldg. 30, Suite 1
Hillsborough, NJ 08844



Catalog No.: H-603
Product name: 2'-Hydroxy- β -Naphthoflavone
Lot No.: 0102008

SOLVENT DMSO
NS 16
DS 0
SWH 9803.922 Hz
FIDRES 0.326819 Hz
AQ 1.5299480 sec
RG 22.6
DW 51.000 usec
DE 6.00 usec
TE 298.2 K
D1 1.5000000 sec
TD0 1

ICC-APR-12
1H IN DMSO
AVANCE-600

==== CHANNEL f1 =====
NUC1 1H
P1 7.50 usec
PL1 2.60 dB
PL1W 6.62584448 W
SFO1 600.3345228 MHz
SI 32768
SF 600.3300114 MHz
WDW EM
SSB 0
LB 0.30 Hz
GB 0
PC 1.00

